



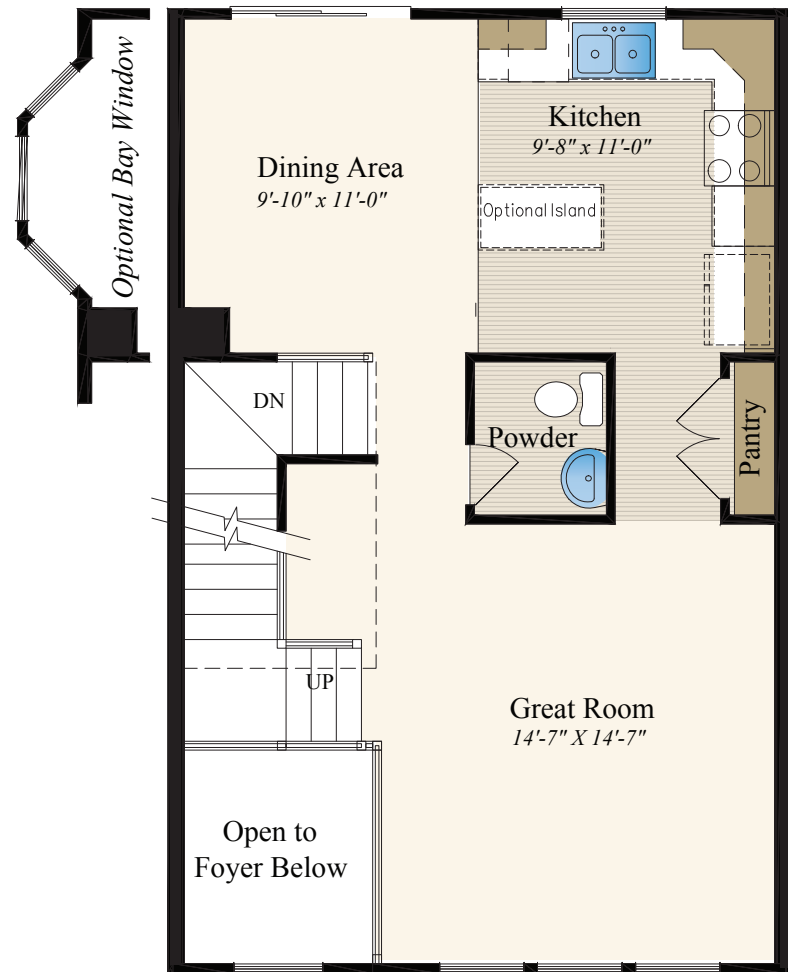
# HEARTLAND Homes

PUT YOUR THUMBPRINT ON OUR BLUE PRINT!

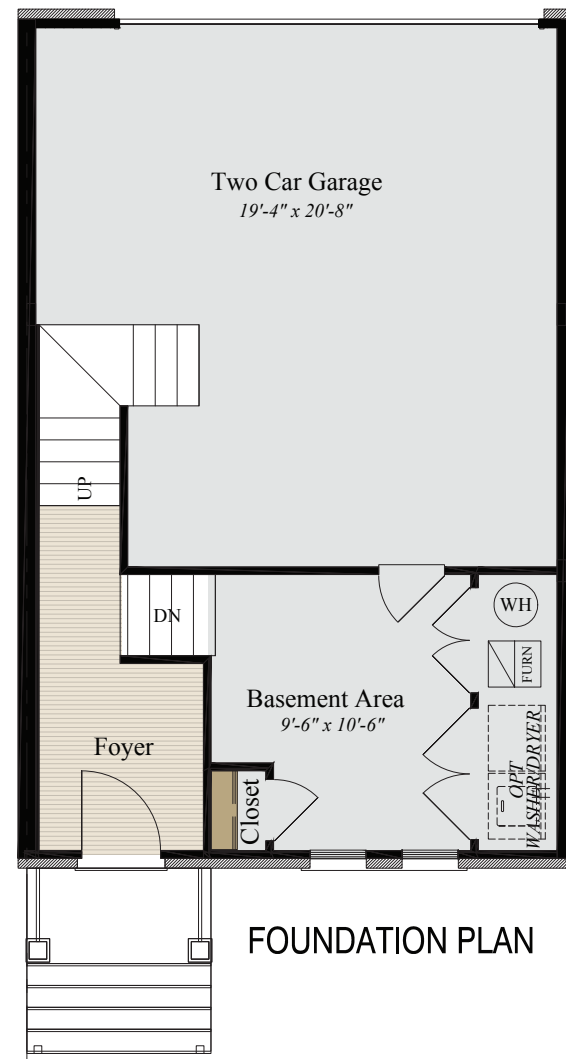
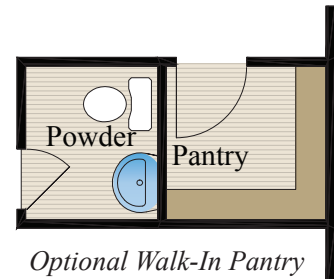
## THE TOWNHOME I

- 3 Bedrooms and 2.5 Baths
- Two Car Integral Garage

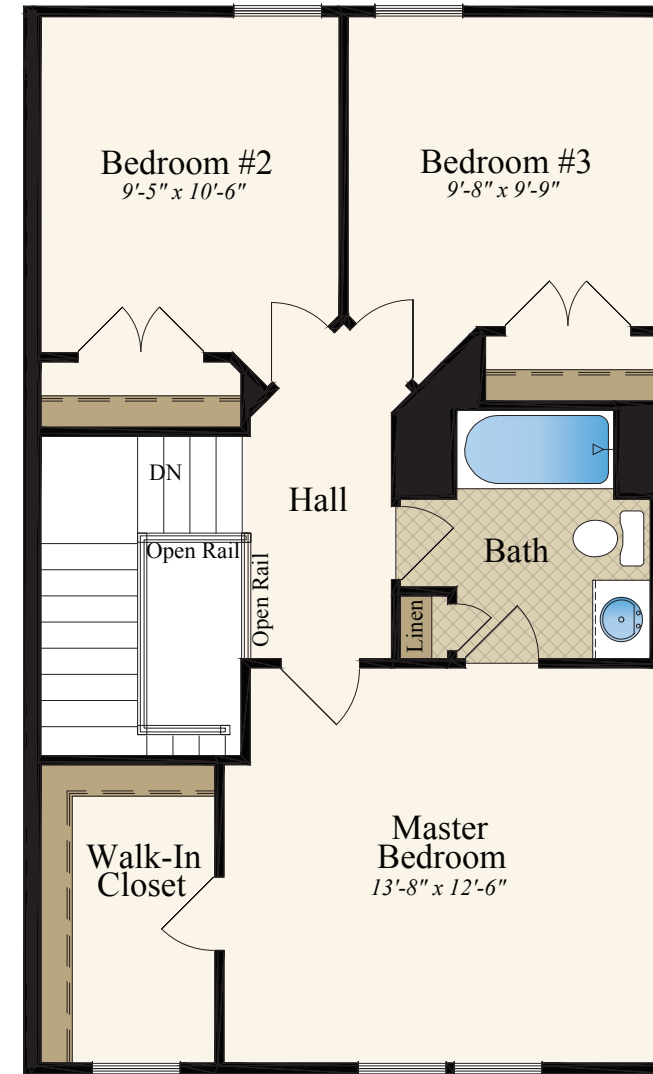
• Approximately 1,288 to 1,664 Square Feet



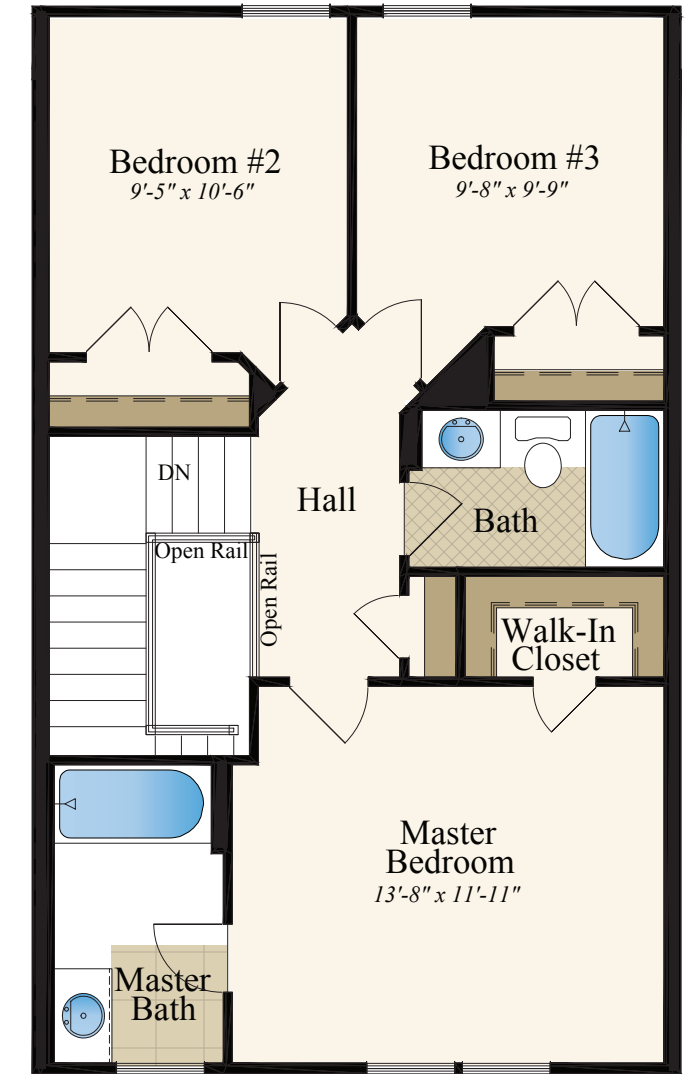
FIRST FLOOR PLAN



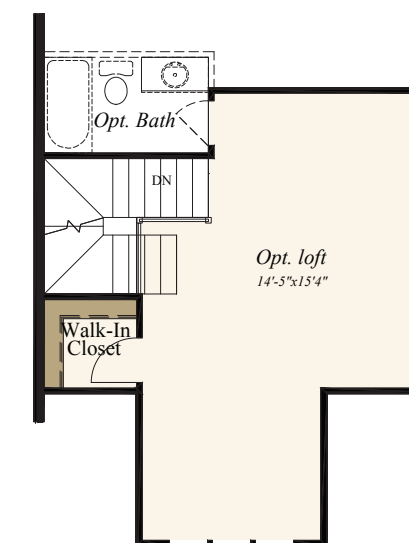
FOUNDATION PLAN



SECOND FLOOR PLAN



OPTIONAL SECOND FLOOR



OPTIONAL THIRD FLOOR