

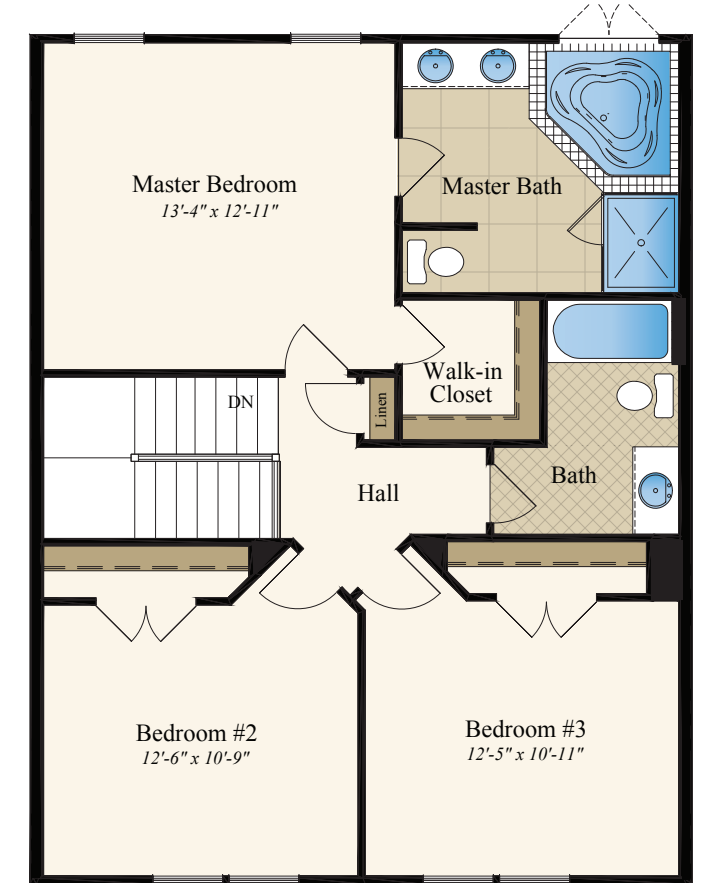
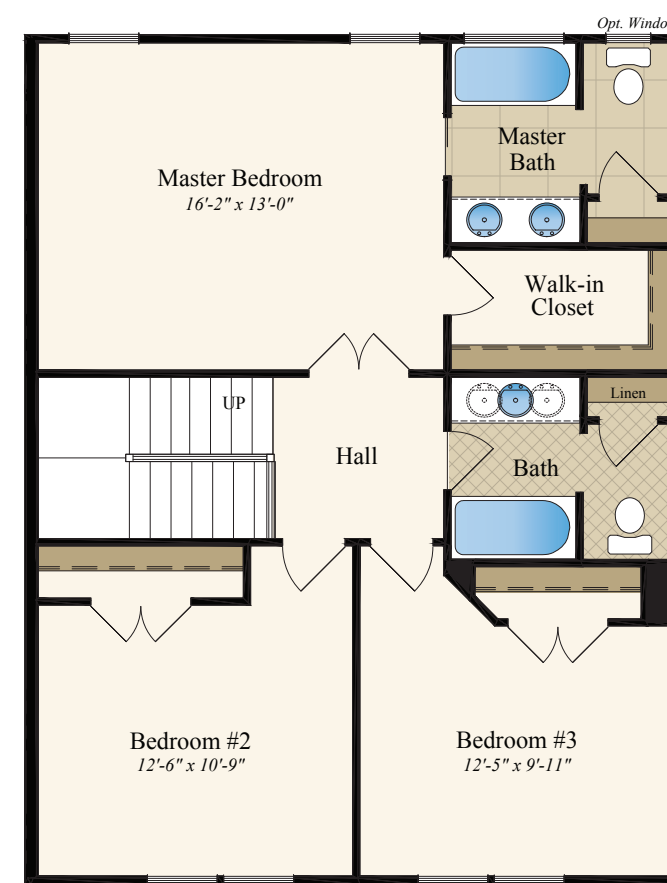
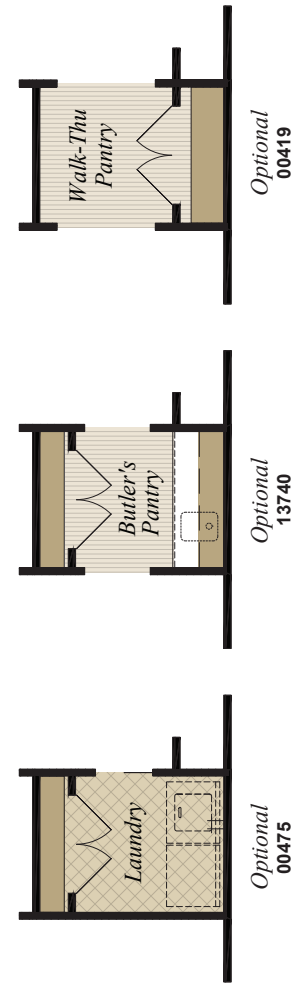
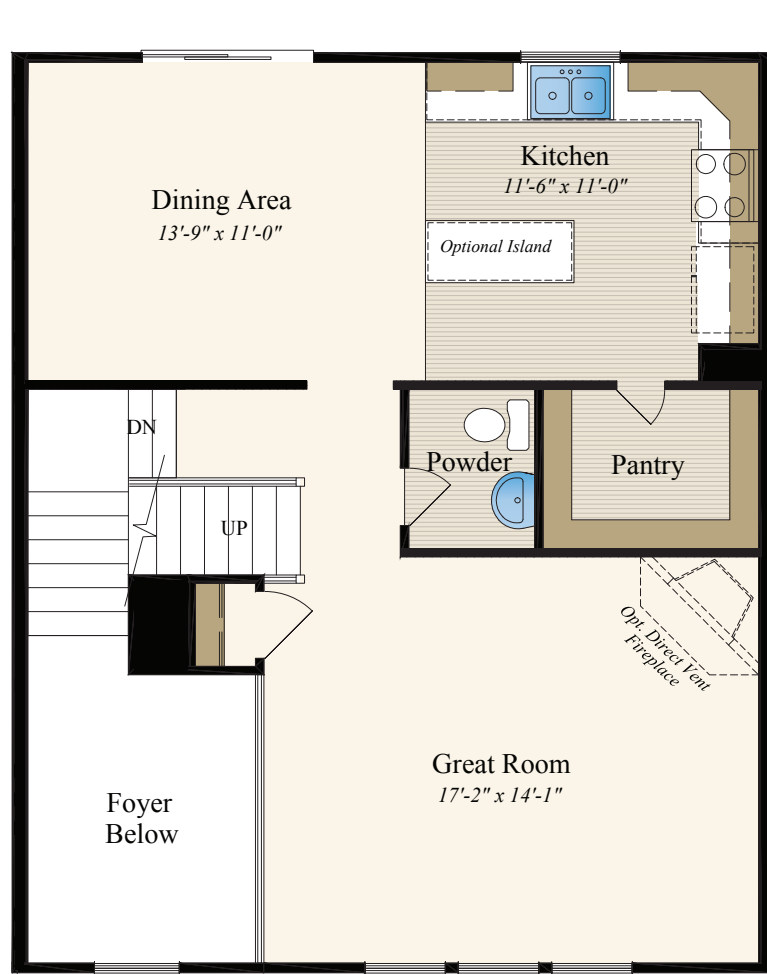


# HEARTLAND Homes

## PUT YOUR THUMBPRINT ON OUR BLUE PRINT! THE TOWNHOME II

- 3 Bedrooms and 2.5 Baths
- Two Car Integral Garage

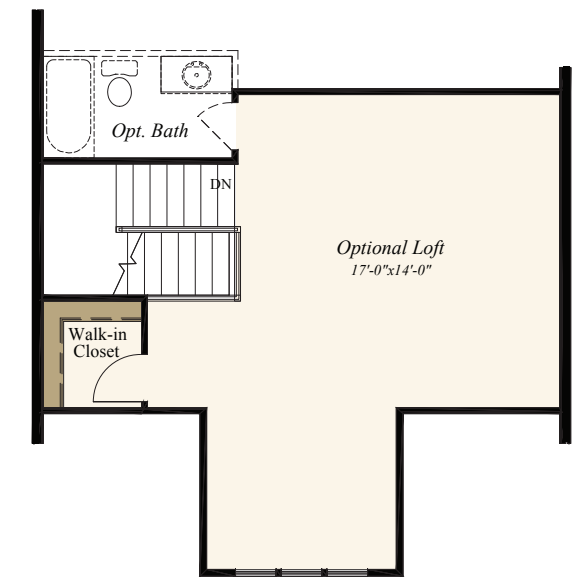
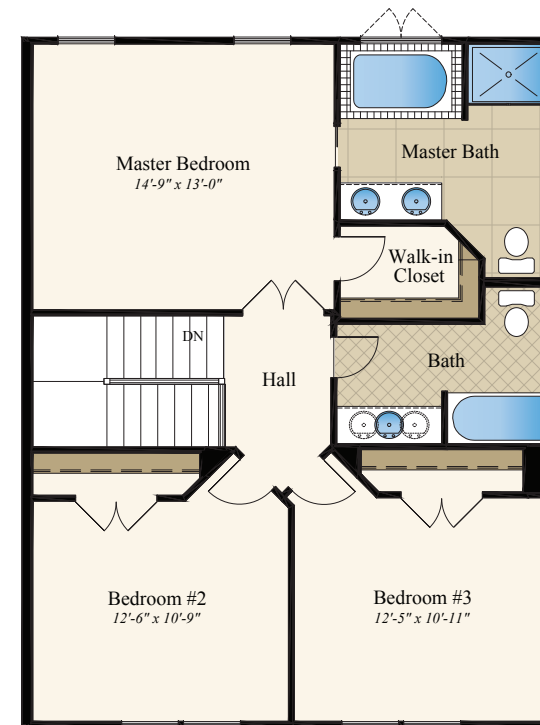
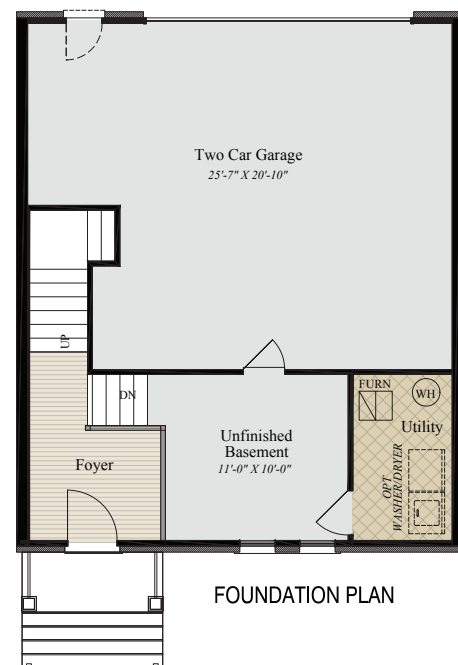
- Approximately 1,542 to 1,955 Square Feet



FIRST FLOOR PLAN

SECOND FLOOR PLAN

OPT. SECOND FLOOR PLAN 00051



OPT. SECOND FLOOR PLAN 00050

OPTIONAL THIRD FLOOR 00653