

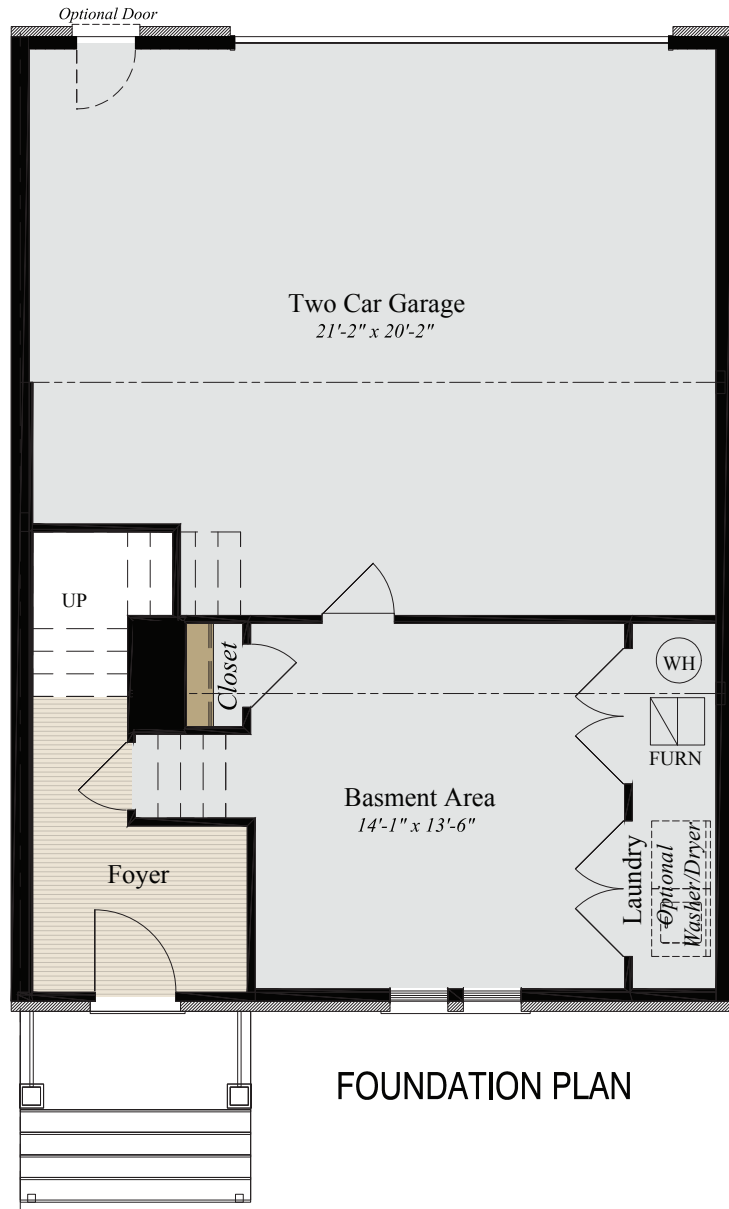


HEARTLAND
Homes

PUT YOUR THUMBPRINT ON OUR BLUE PRINT!
THE TOWNHOME III

- 3 Bedrooms and 2.5 Baths
- Two Car Integral Garage

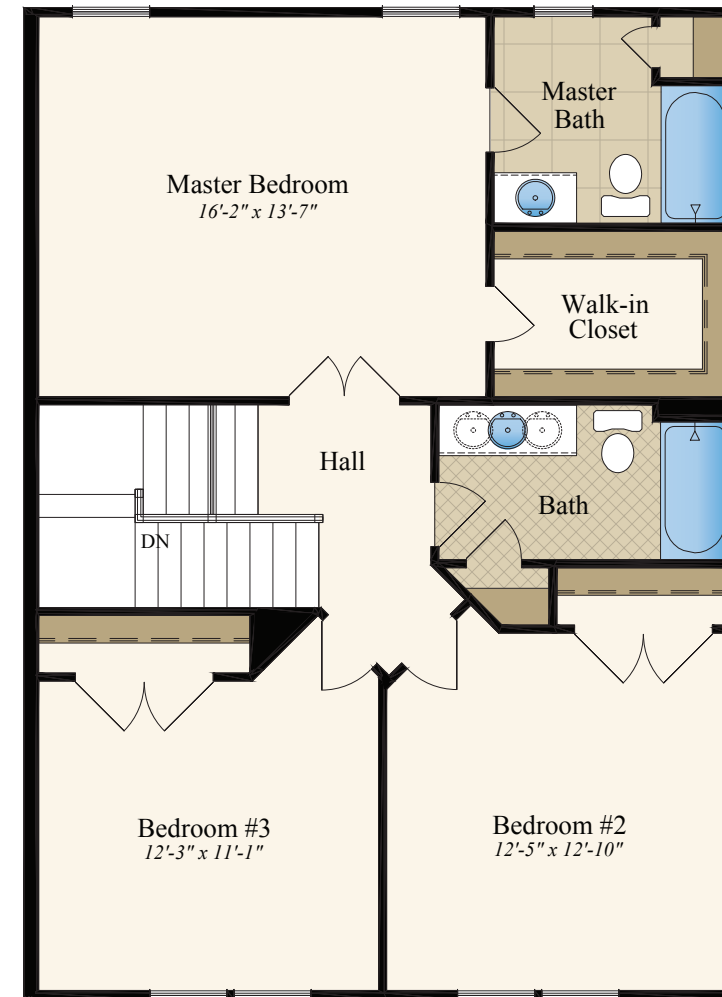
• Approximately 1,710 to 2,234 Square Feet



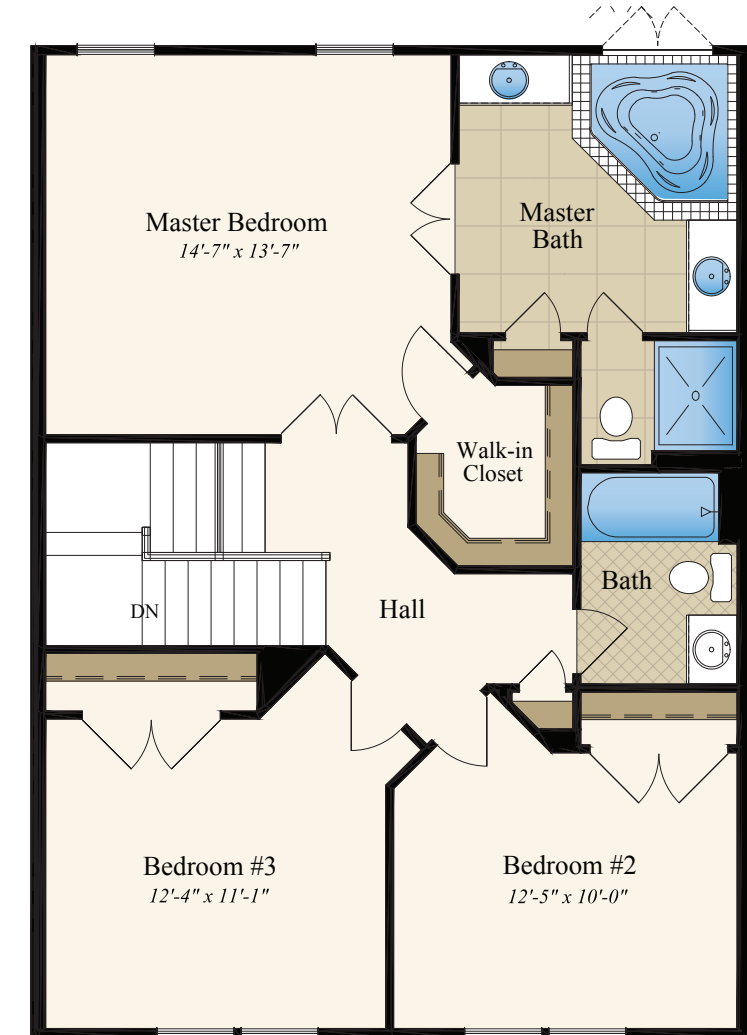
FOUNDATION PLAN



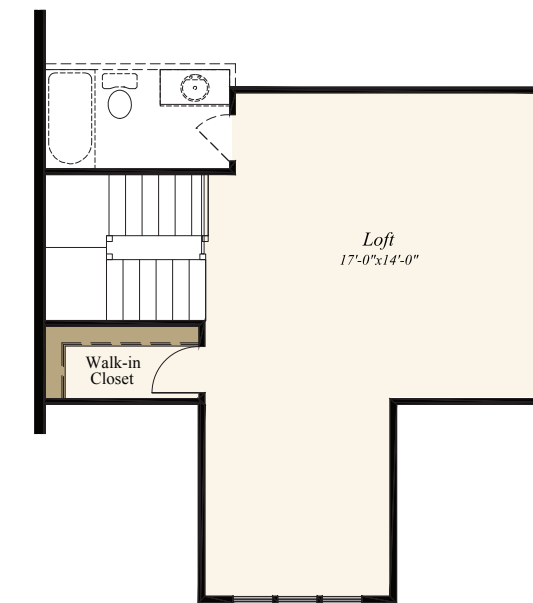
FIRST FLOOR PLAN



SECOND FLOOR PLAN



ALT. SECOND FLOOR PLAN



OPT. THIRD FLOOR