



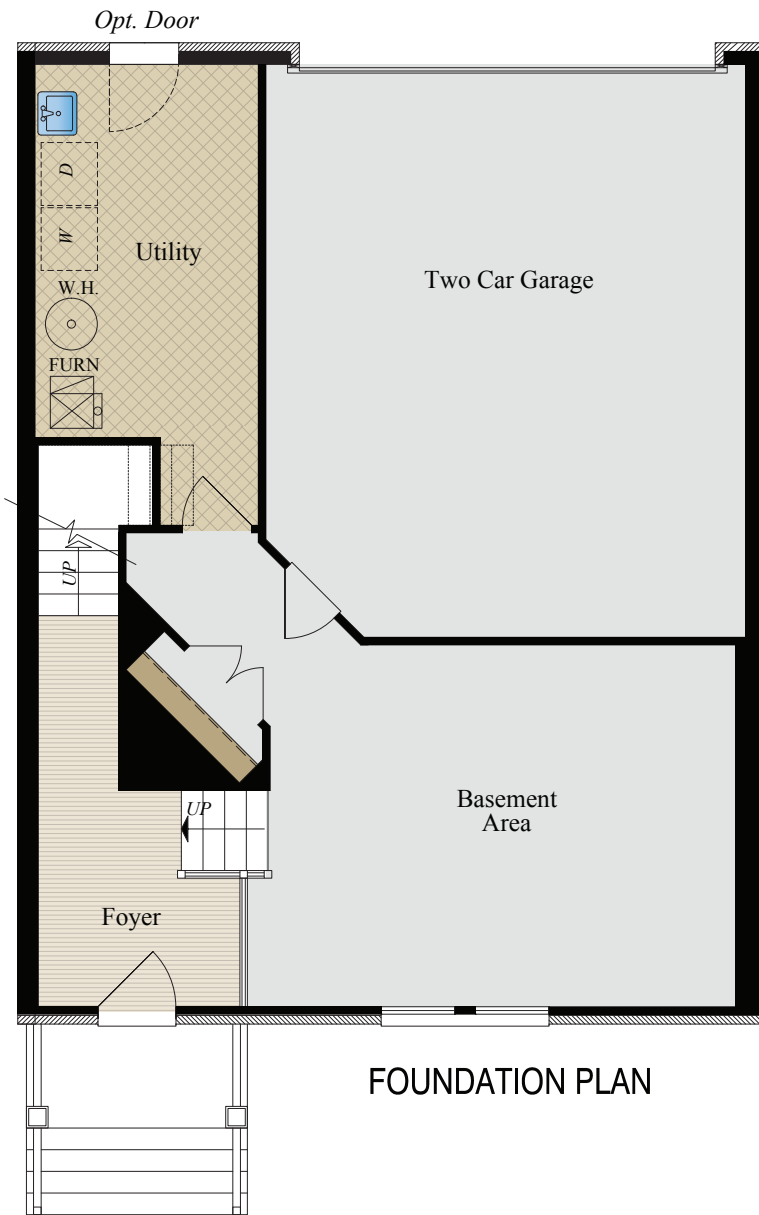
HEARTLAND
Homes

PUT YOUR THUMBPRINT ON OUR BLUE PRINT!

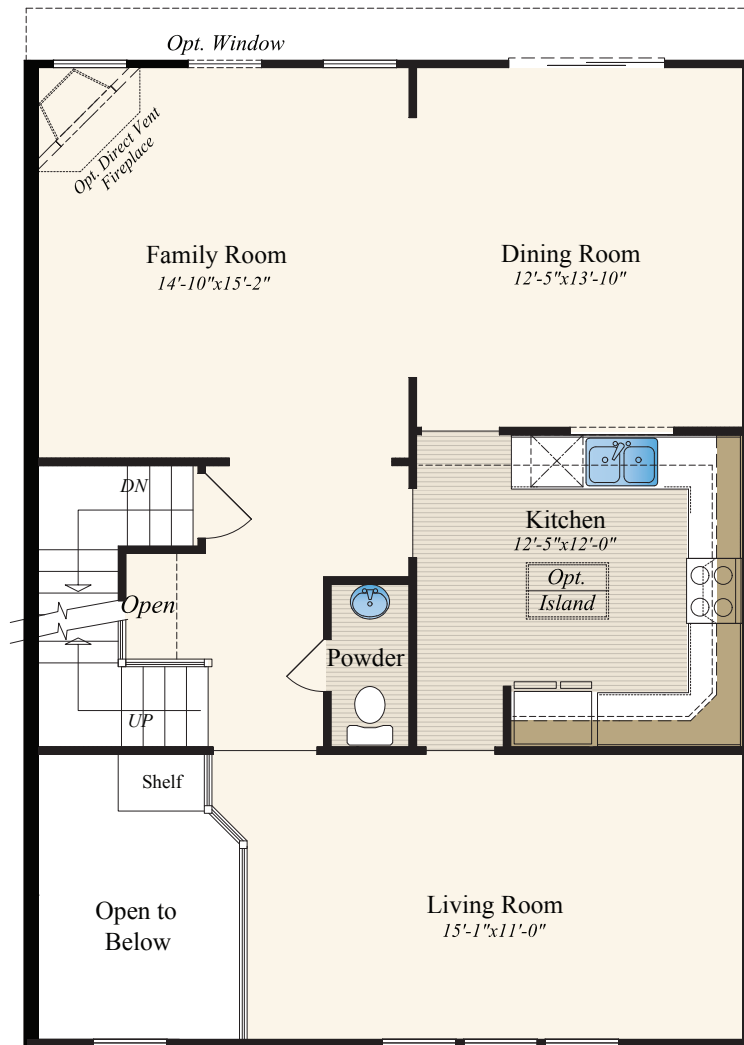
THE TOWNHOME IV

- 3 Bedrooms and 2.5 Baths
- Two Car Integral Garage

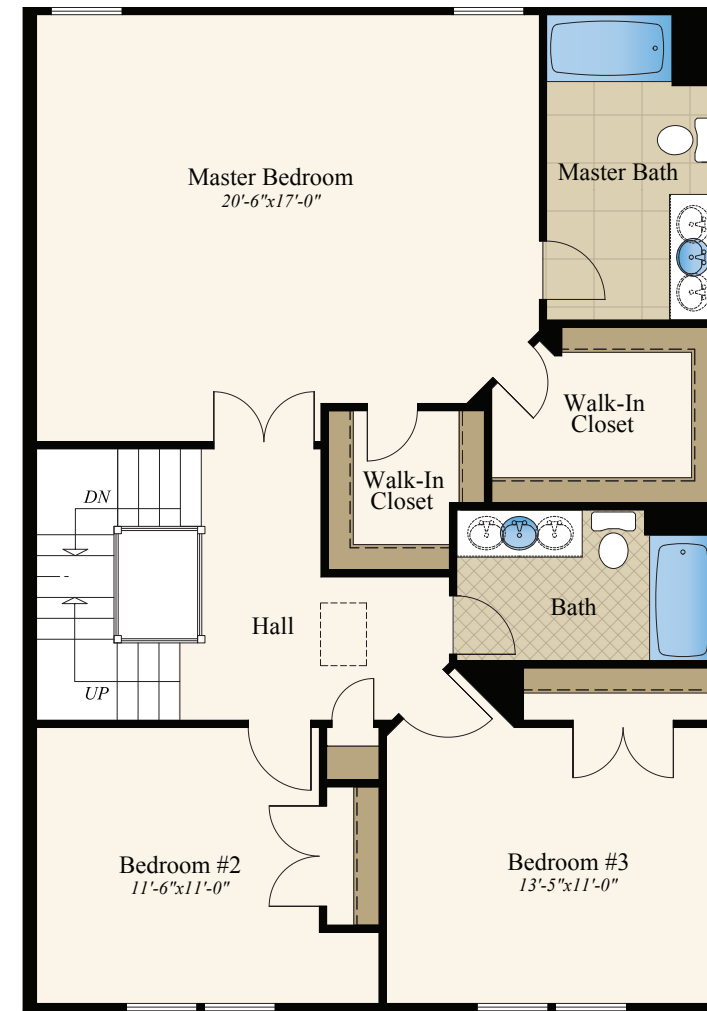
- Approximately 2,111 to 2,539 Square Feet



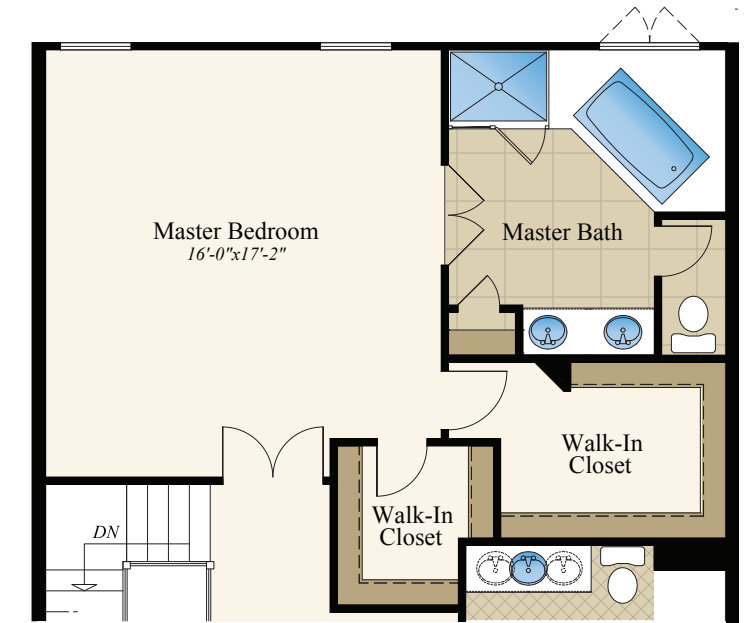
FOUNDATION PLAN



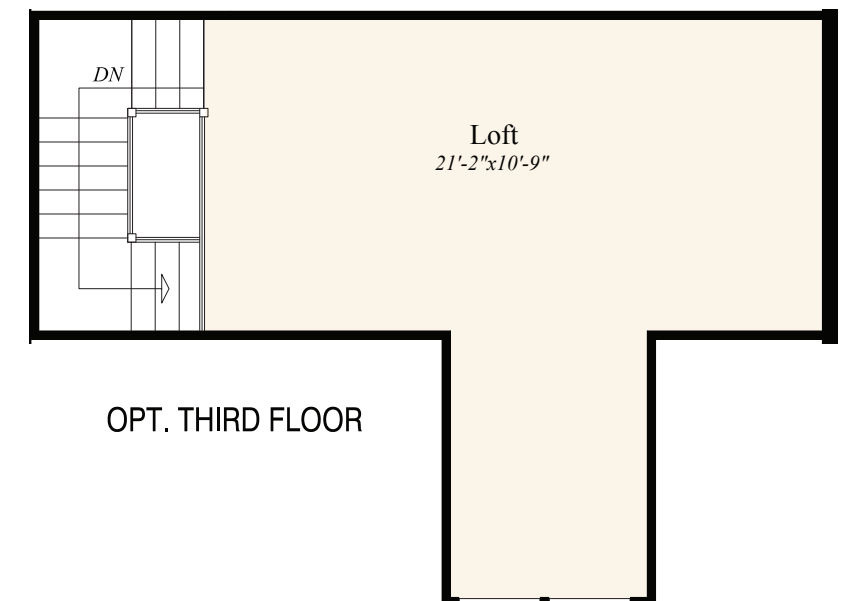
FIRST FLOOR PLAN



SECOND FLOOR PLAN



UPGRADED MASTER BATH PLAN



OPT. THIRD FLOOR